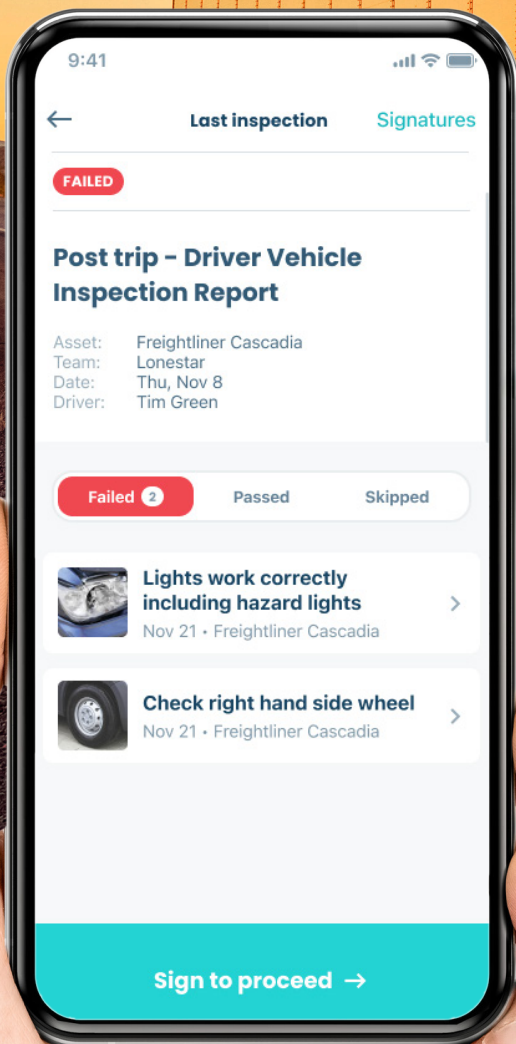




Professional Services

Are you ready to unlock your fleet's potential?



We tailor our professional services to your needs to help you optimize operations, minimize costs and maximize the value of Whip Around's powerful software.

Our experts — with their decades of experience and vast industry knowledge — will dig into your pain points, evaluate your processes and deliver strategic solutions that take your fleet maintenance operations to the next level.



Learn more at whiparound.com Email sales@whiparound.com Call 704-412-3986

Our Services

Consulting: Dig into the details during a discovery session with our experts. We'll assess your operations and identify areas for improvement, then provide a detailed report with strategic recommendations on how to optimize your fleet maintenance processes.

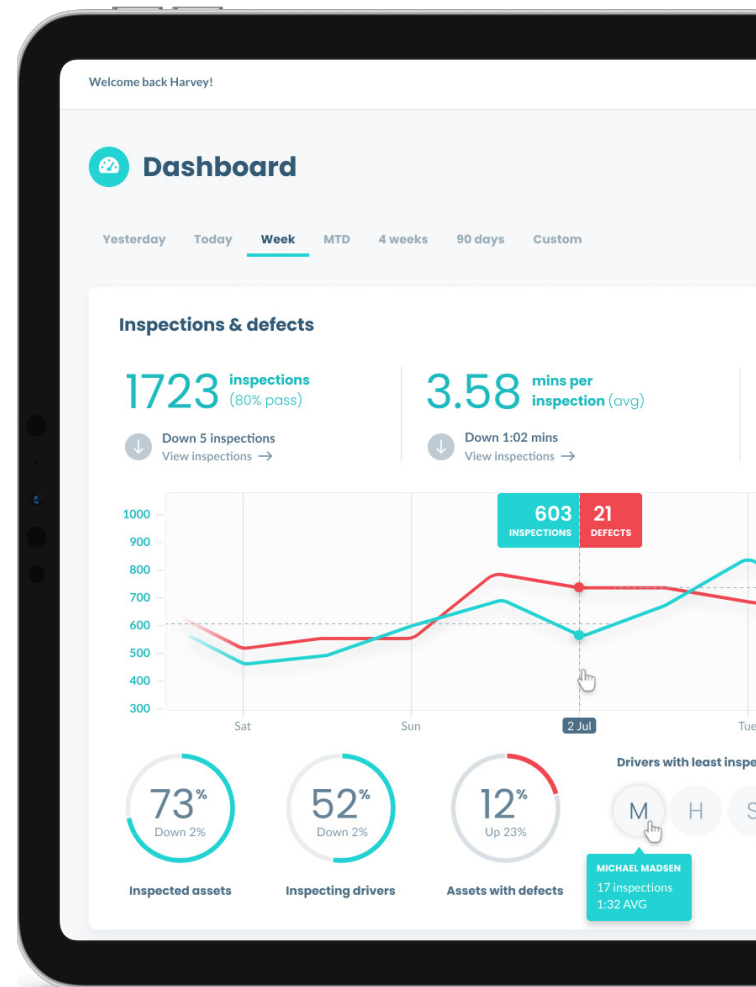
Implementation: Leverage expert guidance to get up and running on the Whip Around platform. Our team makes it quick and easy, ensuring your data is migrated accurately while configuring your system to meet your needs.

Training: Take advantage of comprehensive training programs to ensure your team is equipped with the knowledge and skills they need. Our training can be delivered online or in person, depending on your situation and requirements.

Custom Integrations: Integrate our dynamic fleet maintenance software with your existing systems, such as telematics providers or even accounting and payroll software. Strategic integrations allow you to streamline your operations and reduce manual data entry.

Custom Software Development: Explore custom software solutions to meet your unique business requirements with our team of experienced developers. Whether it's a custom reporting tool or a new feature within our platform and app, we're up to the challenge.

Ongoing Support: Get answers and support whenever you need it via phone, email or live chat. If you're looking for a tutorial or guide that doesn't yet exist, let our team know — we'll get one created to ensure your questions are answered.



A One-of-a-Kind Team

Anchored by experts in fleet maintenance, cutting-edge technology, project management and collaborative partnerships, the Whip Around Professional Services team understands that every business has unique needs — meaning there's no one-size-fits-all solution.

We build strong partnerships with our clients to deliver customized solutions and ongoing support that result in sustained success.

We're nimble and flexible, ready to pivot at a moment's notice to adapt to the changing needs of your business.

The Bottom Line: Optimized Fleet Operations

Partnering with our Professional Services team delivers measurable improvements across your organization.

Maintenance efficiency: Eliminate manual processes and recurring administrative work. Learn how to use automated workflows and centralized data to free up your team's focus for the most high-impact initiatives.

Risk reduction: See how consistent inspections, proactive repairs and enhanced driver accountability can significantly mitigate safety risks. Easily achieve full compliance with DOT and other regulations.

Productivity gains: Use real-time fleet data to optimize inspections, preventive maintenance, fuel management and cross-team communications. Accurately tracking assets and drivers can supercharge your fleet's productivity.

Cost savings: Set up consistent, reliable preventive maintenance processes and alerts to minimize repair costs and vehicle downtime. Better maintenance practices will increase asset lifespan and reduce replacement costs.

Focus on growth: The more time and resources you can save, the more quickly you'll accelerate growth. Once you're no longer mired in daily low-value tasks, you can shift focus to impactful big-picture strategy.

Get in Touch

Top forward-thinking fleets rely on the Whip Around Professional Services team. Leverage our specialized expertise to optimize your operations, too.

North Carolina

704 489 3268
6302 Fairview Rd #309,
Charlotte, NC 28210, USA

California

704 489 3268
1650 N Coast Highway 101,
Encinitas, CA 92024, USA

Auckland, New Zealand

649 886 3110
111 Franklin Road, Auckland 1011



Learn more at [whiparound.com](https://www.whiparound.com) Email team@whiparound.com Call 704-412-3986

